

PDLM 2/3

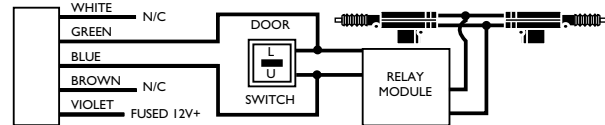
Power Door Lock Module Instructions

1. Plug the LONG harness into the door lock and alarm modules.
2. Plug the 5-wire harness into the door lock module.
3. Wire all 5 wires to appropriate door lock wires (See schematic below).

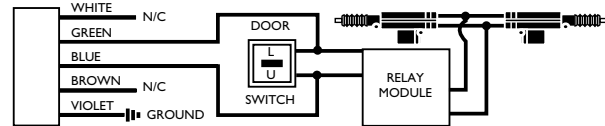
Color Code for PDLM 2/3

- Violet- (87) Polarity select wire
- Brown- (87a) Unlock switch wire
- Blue- (30) Unlock motor wire
- Green- (30) Lock motor wire
- White- (87a) Lock switch wire

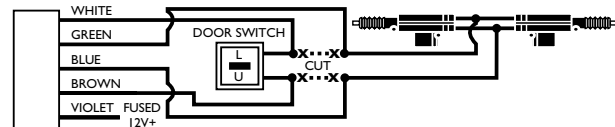
POSITIVE PULSE DOOR LOCK SYSTEM



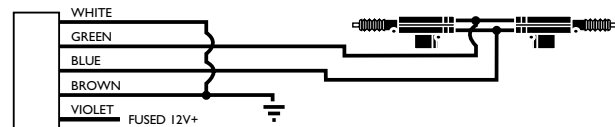
NEGATIVE PULSE DOOR LOCK SYSTEM



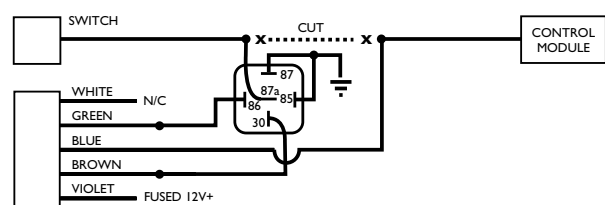
REVERSE POLARITY FACTORY DOOR LOCK SYSTEM



ADDING ACTUATORS



MERCEDES (VACUUM SYSTEM) DIP SWITCH TO #1 TO OFF



PDLM 2/3

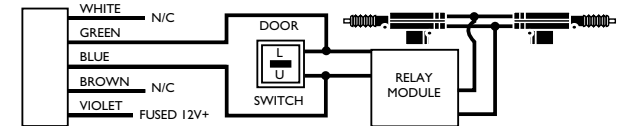
Power Door Lock Module Instructions

1. Plug the LONG harness into the door lock and alarm modules.
2. Plug the 5-wire harness into the door lock module.
3. Wire all 5 wires to appropriate door lock wires (See schematic below).

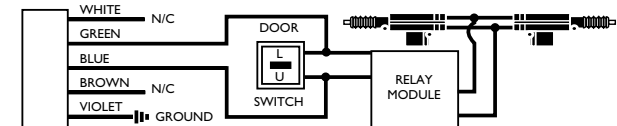
Color Code for PDLM 2/3

- Violet- (87) Polarity select wire
- Brown- (87a) Unlock switch wire
- Blue- (30) Unlock motor wire
- Green- (30) Lock motor wire
- White- (87a) Lock switch wire

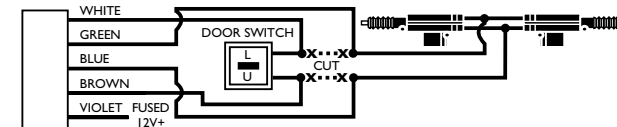
POSITIVE PULSE DOOR LOCK SYSTEM



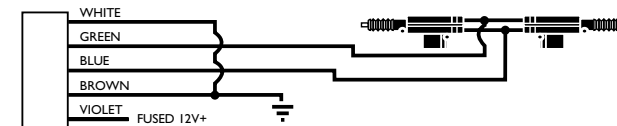
NEGATIVE PULSE DOOR LOCK SYSTEM



REVERSE POLARITY FACTORY DOOR LOCK SYSTEM



ADDING ACTUATORS



MERCEDES (VACUUM SYSTEM) DIP SWITCH TO #1 TO OFF

